



Overview

Project Title:

CCTV control room furniture

Client:

Bluegrain Security

Sector:

Security

Completion:

August 2019

Project Overview:

As part of a control room refurbishment, Thinking Space provided a two-operator console in a curved configuration. The desking focuses around a large Evolution media wall in a 5 x 2 configuration, for CCTV monitoring purposes. The client's use of a feature wall to match their corporate branding teams with the curved end panel of the console.

“

We really are pleased with the quality of service you have provided us from end to end...From sales to design, project management and installation everything has been delivered to quality standard and one your company should be proud of...I would have no hesitation to recommend you to anyone

”

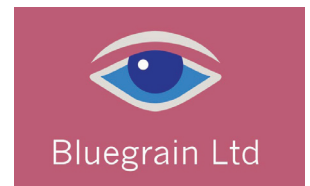
Mark Daly, Bluegrain Security

Case Study

CCTV control room furniture for Bluegrain Security

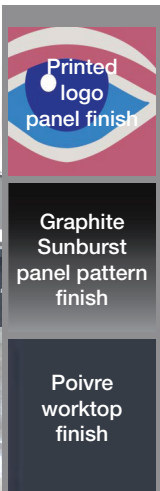
Overview of client

Bluegrain Security offer professional security services in and around the Manchester area for residential customers and businesses. Monitoring their clients premises as well as receiving visitors to their control room, the client wanted to create a corporate feel. With their logo as a focus, the pink and grey colour scheme was chosen for the room and technical furniture.

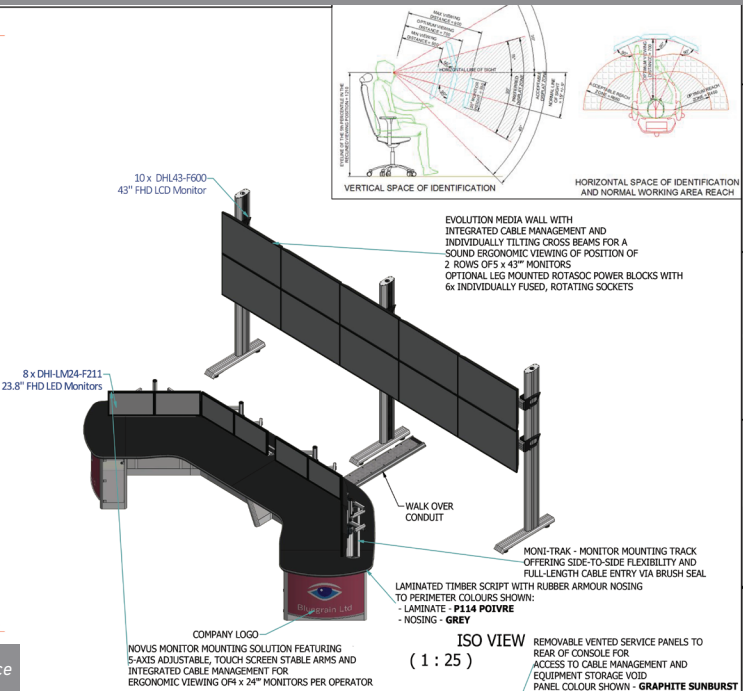
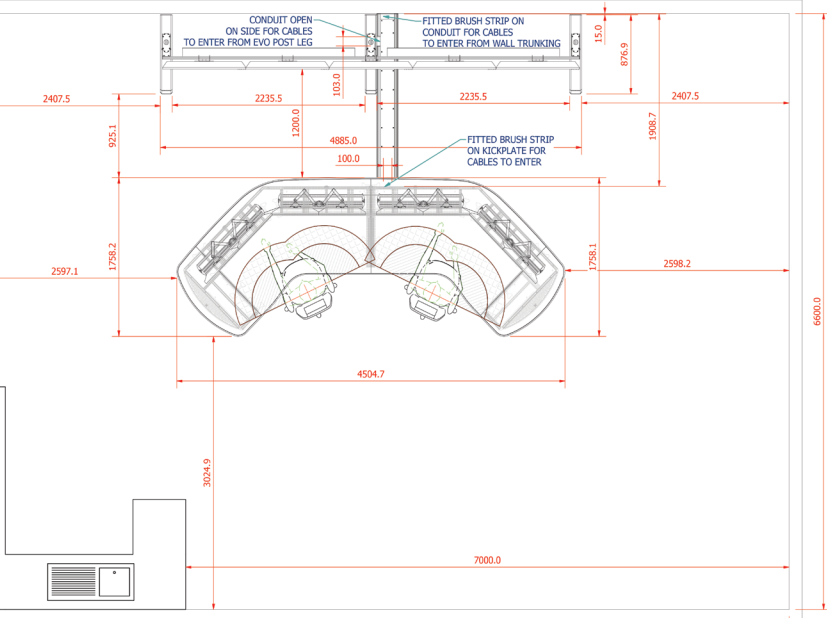


Scope of the project

After visiting the Thinking Space website and getting in touch for a media wall solution, Thinking Space proposed an ergonomic control room console, complete with media wall for their new control room. A design based on a typical CCTV control room set up was provided as a proposal initially to allow the client to appreciate how it would look before finalising their requirements.



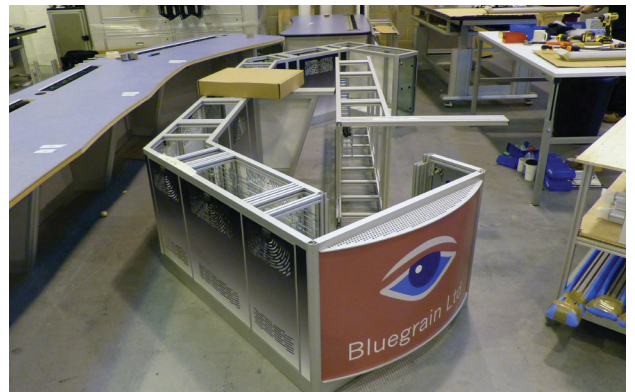
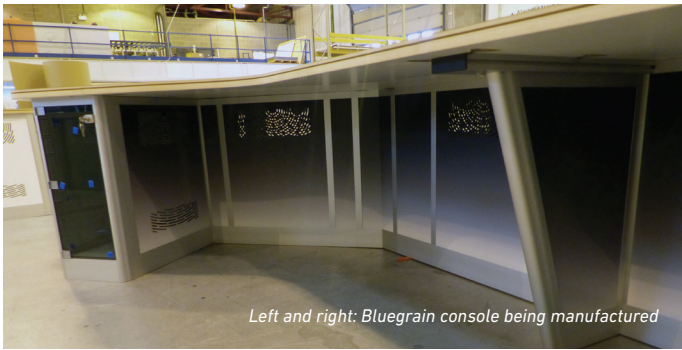
improving working environments



Above: 2D proposal drawing provided by Thinking Space as part of their free design service

Project execution

Thinking Space designed and manufactured a custom security services management console, 4.5 metres in length, with storage units, Moni-Trak and removable access panels for cable management. Choosing materials from the brand new product configurator, a worktop of Poivre was chosen to complement the graphite sunburst printing pattern effect on the panels. The curved end panel has been designed with the client's logo of pink and blue, which teams perfectly with their pink feature wall behind the media wall. This creates a focus in the room, and provides an impressive, clean feel which should "wow" visitors.



"We really are pleased with the quality of service you have provided us from end to end...From sales to design, project management and installation everything has been delivered to quality standard and one your company should be proud of... I would have no hesitation to recommend you to anyone".

Mark Daly, Bluegrain Security



Left and right: Bluegrain CCTV control room in operation

Thinking Space Systems Ltd
Unit 10b The Quadrangle
Abbey Park Industrial Estate
Romsey
Hampshire SO51 9DL
United Kingdom

t: +44 (0) 1794 516633
f: +44 (0) 1794 516632

w: www.thinking-space.com
e: info@thinking-space.com